

SOUTHWEST WEST CENTRAL SERVICE COOPERATIVE



Education & Administrative Resources

ANNUAL IMPACT REPORT TO OUR PARTNERS 2024-25





From The **EXECUTIVE DIRECTOR**

Year after year, SWWC continues to fulfill its mission of being a collaborative partner, offering exceptional services and innovative solutions. Our staff are the leaders of this mission, delivering services with both excellence and care.

In 2024-25, SWWC expanded its programs for schools, cities, counties, and other agencies. Growth was a common theme across all departments – from finance and cybersecurity to mental health, special education support and student enrichment. A notable collaboration with the Minnesota Department of Education placed SWWC at the forefront of literacy support in the region (check out our literacy feature on page 12-13).

Capital improvements were an important highlight of 2024-25. With new educational learning centers (ELCs) opening in the fall and moving into the new Marshall administrative office in the summer, SWWC has demonstrated commitment to meeting the needs of those we serve!

Our staff and board are at the heart of our success! SWWC cannot provide exceptional programs and services without incredible staff and a strong governing board. Although staffing continues to be a challenge, the outstanding SWWC team continues to be the cornerstone for all the work being done at SWWC. It has never been more important or more obvious that SWWC has **GREAT people doing GREAT things** every day!

Everything we do is driven by our members' needs and grounded in our intentional focus on member services. SWWC remains committed to collaborating, innovating, and providing strong support to our membership. Our member feedback survey shows that members value SWWC programs and services, and I am so proud of the work we do for all of you. Collaboration, innovation, and member services are the foundation for SWWC's continued success. This is our promise and commitment as we work with you to create a future where children, families, schools, and communities learn, succeed, and thrive.

Cliff Carmody

Executive Director

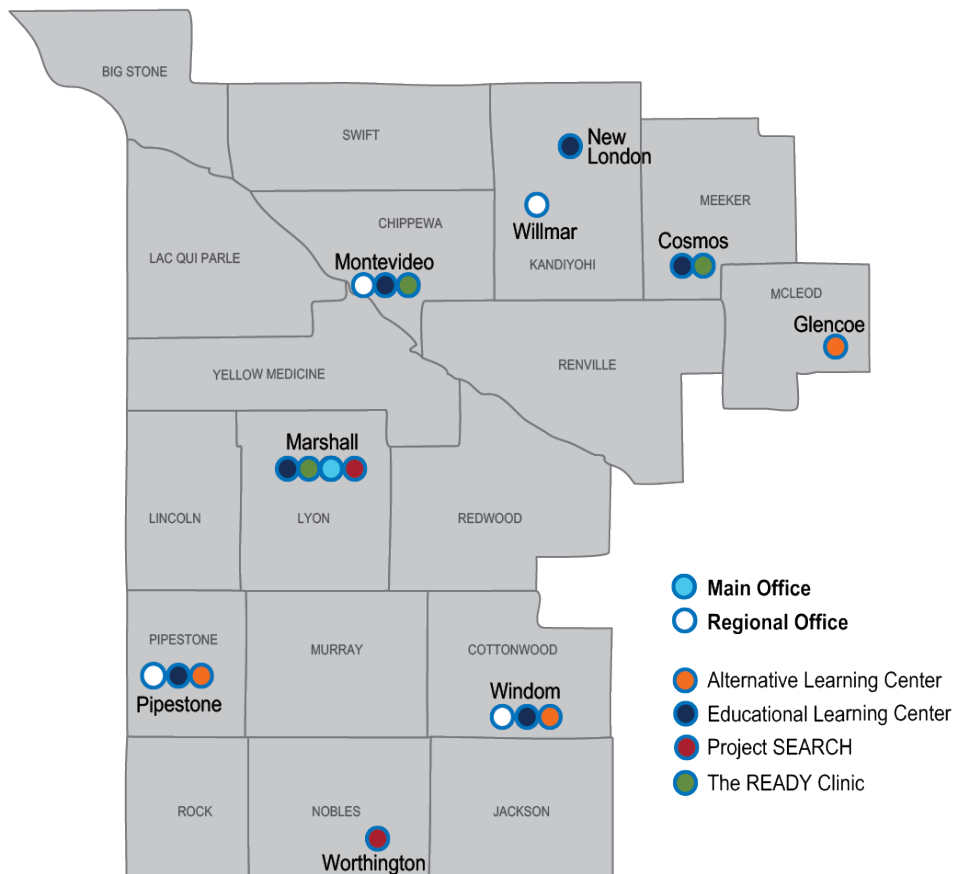
MISSION & VISION

Mission: To be a collaborative partner providing exceptional services, innovative solutions and proactive support.

Vision: To create a future where children, families, schools and communities learn, succeed and thrive.



SERVICE AREA & LOCATIONS





From The **BOARD CHAIR**

On behalf of the SWWC board I would like to thank our members and partner organizations for the trust they have in the services we provide. I lead a very strong and highly functioning board that has the success and wellbeing of all the kids we serve at the forefront of everything we do. This past year we have continued to upgrade our facilities, including a new ELC and a much-needed new office building in Marshall. We also continue to add programs and employees to further our mission. However, all this does not come without struggles as we continue to have staffing and funding issues. With that said, SWWC will do all we can to provide the highest quality services in our region and beyond. I've said it before and I'll say it again: SWWC is the premier service cooperative in the state, if not the nation. Thanks again for your continued support!

Matt Coleman

Board Chair
Marshall Public Schools

BOARD OF DIRECTORS



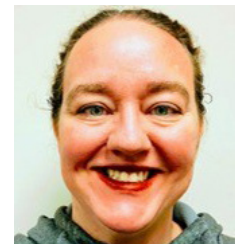
Matt Coleman
Chair
Marshall Schools



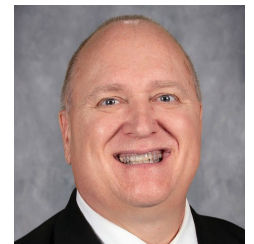
Jody Bauer
Vice-Chair
Tracy Area Schools



Carla Olson
Treasurer
KMS Schools



Amanda Lecy
Clerk
YME Schools



Brad Johnson
Ex-Officio
RCW Schools



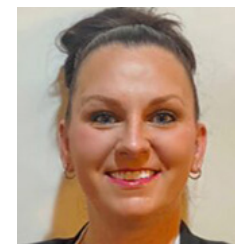
Ben Bothun
Lac qui Parle County



Becky Foster
WWG Schools



Tonya Kelly
Dawson-Boyd Schools



Becky Paluch
Ivanhoe Schools



Nicole Swanson
Tracy Area Schools

LEADERSHIP

Cliff Carmody, Executive Director

Kari Bailey, Director of Human Resources

Amber Bruns, Clinical Director of Behavioral Health Services

Liz Deen, Senior Director of Teaching & Learning Services

Tegan Gillund, Director of Finance

Shelly Maes, Director of Member Engagement & SWWC Foundation Executive Director

Mary Palmer, Senior Director of Special Services

Christine Schmitt, Director of Business Services

Josh Sumption, Chief Technology and Information Officer

SWWC TEAM

400+

Staff Working Across the Region

27

Staff Working 20+ Years

22

Staff Working 15-19 Years

39

Staff Working 10-14 Years



**GREAT people
doing
GREAT things!**

MEMBERSHIP

Full Membership

Public schools, cities, counties, and other governmental agencies within the SWWC region.

Associate Membership

Non-public schools, partnership agencies and nonprofits within the SWWC region AND public and non-public schools, cities, counties, other governmental agencies, partnership agencies and nonprofits outside the SWWC region.

110+
Full
Members

130+
Associate
Members

2024-25 SUPERINTENDENTS' EXECUTIVE COUNCIL

Molly Schilling, Adrian Public Schools, Chair
Ray Hassing, Round Lake-Brewster Schools, Vice Chair
Scott Monson, Minneota Public Schools, Past Chair

Bill Adams, Willmar Public Schools
Chad Anderson, Tracy Area Schools
Paul Bang, Heron Lake-Okabena Schools
Dan Deitte, Hutchinson Public Schools
Chris Fenske, Lakeview Schools
Todd Holthaus, Hills-Beaver Creek Schools
Brad Johnson, Renville County West Schools
James Menton, BOLD Schools
Joe Meyer, Murray County Central Schools
Ryan Nielsen, Canby Schools
Melissa Radeke, Lester Prairie Schools
Barry Schmidt, Jackson County Central Schools
Rich Schneider, Yellow Medicine East Schools
Chris Sonju, Glencoe-Silver Lake Schools
Klint Willert, Pipestone Area Schools
Terry Gaalswyk, Minnesota West
Sonya Vierstraete, Southwest Minnesota State University

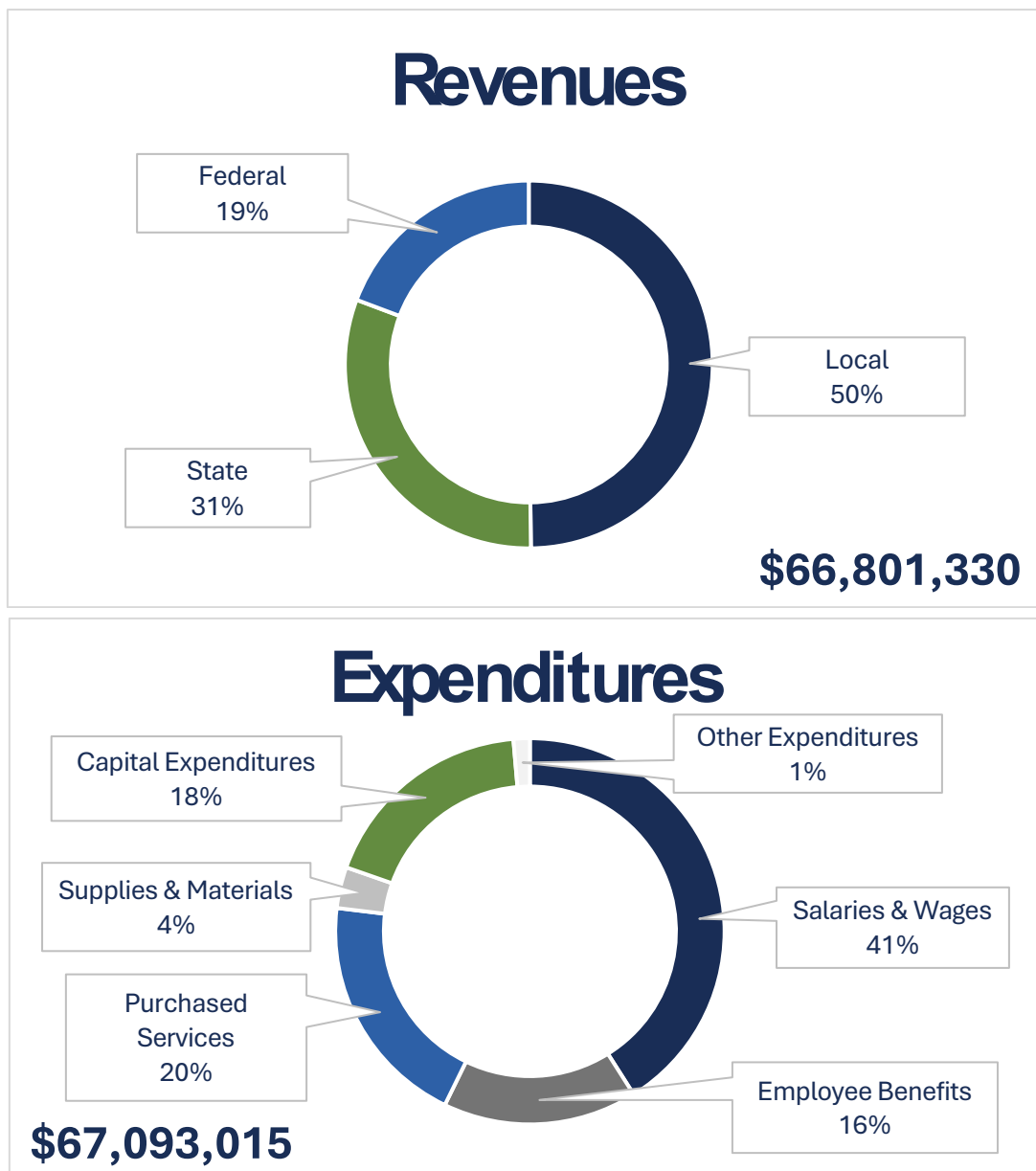


The Superintendents' Executive Council provides advice and support to SWWC Administration and the SWWC Board of Directors. Members are elected and representative of SWWC membership.

FINANCIALS

Service, integrity, sincerity and collaboration are the foundation of all we do and drive our efforts to be responsible financial stewards of the resources we are given to serve our members.

The financial information below comes from the 2024-25 SWWC Final Budget approved by the SWWC Board of Directors. Complete copies of audited financial statements are available at the SWWC office.



2024-25 IMPACT IN NUMBERS



11,382

*Students participating
in SWWC enrichment
events*



254

*Students enrolled at
SWWC's ELCs*



133

*Students Enrolled at
SWWC's ALCs*



831

*Paras across the region
trained at the Fall 2024
SWWC Para Conferences*



8,800+

*Support Tickets
Processed by the SWWC
Technology Helpdesk*



83

*Participants in the
SWWC New/Newer
SpEd Teacher Cohort*



122,000

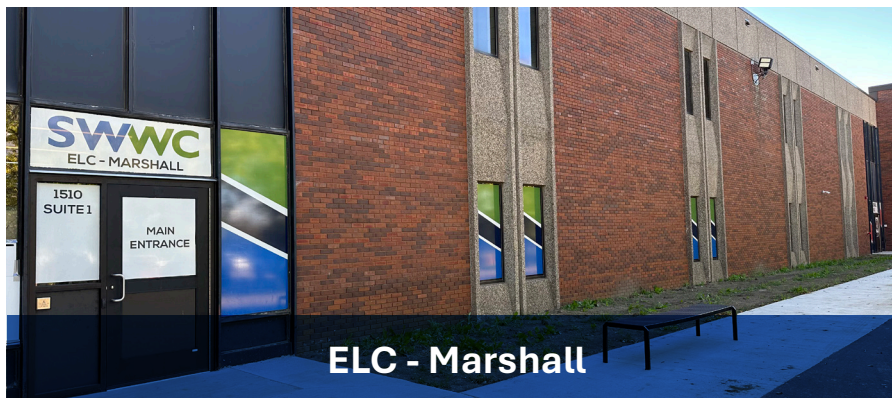
*Students Statewide
Covered by the SWWC
Data Privacy Program*



OPEN HOUSES & RIBBON CUTTINGS

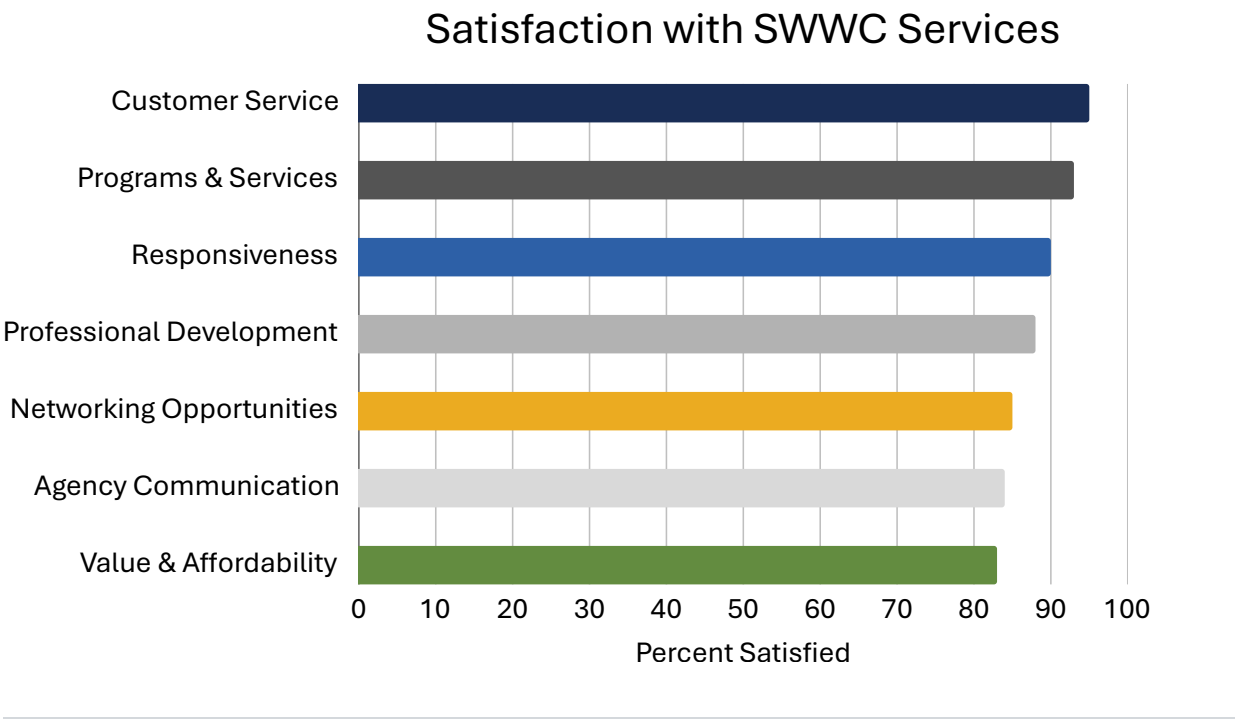
In September 2016, SWWC began the process of developing a baseline real estate and facility plan to address the facility needs of the agency. Since then, we built a new educational learning center in Montevideo, remodeled the educational learning center in Cosmos, moved to a new building in Windom, and remodeled our educational learning center space in Pipestone.

Nearly ten years later, we have the final three facilities in place. The new ELC in New London opened just in time for the 2024-25 school year. The remodeled ELC in Marshall on the campus of Southwest Minnesota State University was also ready to go for the 2024-25 school year. Finally, in June 2025, we moved into the new administrative building in Marshall.



MEMBER SURVEY RESULTS

Thank you to all of our members who took the time to complete the 2025 Member Survey. Your feedback is invaluable in helping us understand what’s working well and where we can grow. We are carefully reviewing every comment and suggestion, and your insights are directly shaping our planning for the upcoming year. Together, we can continue strengthening our programs, services, and support for you, your staff, and your students. We appreciate your partnership and commitment to our shared success.



TOP MEMBER PRIORITIES FOR THE NEXT 12-24 MONTHS

- Budget/Financial Stability
- Filling teacher vacancies/retaining staff
- READ Act implementation
- Affordable health insurance
- Keeping district technology updated

TOP MEMBER CONCERNS FOR THE NEXT 12-24 MONTHS

- Budgets/Finance/Funding
- Staffing
- State/Federal Oversight & Mandates
- Paid Leave
- Artificial Intelligence

“SWWC is a great organization with great personnel!”

FROM UNCERTAINTY TO HOPE: FAMILIES FIND SUPPORT AT TRC

For families of young children with autism, life can often feel overwhelming—filled with questions, uncertainty, and worry about the future. The READY Clinic (TRC) at SWWC meets families in that space with something powerful: hope, practical support, and real progress.

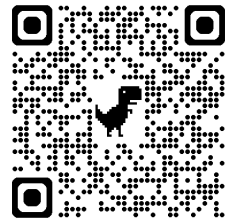
Through Applied Behavior Analysis (ABA) therapy, TRC provides individualized strategies that help children from birth to age 6 build critical skills in communication, behavior, and daily routines. But the impact goes far beyond therapy sessions. Parents and families are included every step of the way, learning how to support growth at home and celebrate even the smallest victories. During 2024-25, TRC served 40 children for diagnostic evaluations and intensive in-clinic services.

One parent described those early days with emotion: “When we first came here, we didn’t know what to expect. But The READY Clinic gave us the tools, encouragement, and belief that our child could thrive.” She added, “We’ve seen changes we didn’t think were possible—our child is talking more, playing more, and becoming more independent every day.”

These milestones may seem small to others, but for families of kids with autism, they are life-changing. By the time children transition into school, they’ve gained confidence, independence, and stronger connections with those around them.

TRC isn’t just preparing children for classrooms—it’s equipping them for life, giving families a renewed sense of hope and a clear vision of what’s possible.

Scan the QR code to see the video feature on The READY Clinic’s impact.



BUILDING LITERACY: IMPACT OF THE REGIONAL LITERACY NETWORK

The Regional Literacy Network, a collaborative effort between the Minnesota Department of Education and the Minnesota Service Cooperatives (an association of nine service cooperatives across the state) plays a crucial role in supporting literacy across SWWC member districts. Through this partnership, the network aims to build district-level capacity to implement high-quality literacy instruction and improve outcomes for all students.

The network works closely with every district, supporting district literacy leads and their teams through both virtual and in-person training sessions, as well as two Communities of Practice. Local Certified Facilitators and District Literacy Leads.

The impact of this work is significant. SWWC serves 58 districts and has trained 363 educators in the 2024-25 school year. “Our SWWC region led the charge in the MN READ Act Structured Literacy Paraprofessional Training Pilot with 3 districts participating resulting in 205 paras being trained. These participants provided valuable feedback to improve the training for the rest of the state!” Natalie says. Beyond statistics, Natalie notes the long-term effect: “Our most vulnerable students often can’t attend extra tutoring outside school hours. By equipping educators with the right tools and support, we reduce the need for costly interventions later.”

Success stories abound. Districts across the region have embraced new strategies and welcomed the network into their classrooms, demonstrating a commitment to continuous improvement. “I’m really proud of our region,” Natalie shares. “They’ve allowed us to come into their space and do something better and different. There’s so many great schools that are committed to students and literacy.”

With financial support, training resources, and administrative buy-in, the Regional Literacy Network is transforming the literacy landscape in SWWC schools. Its work ensures that every student has the foundation to succeed—not just academically, but in life.

MN READ ACT PD



COMMUNITY OF PRACTICE

District Literacy
Lead

95%

of districts in the region participated in the DLL CoP. SWWC offered 23 opportunities to engage totaling 52 hours.

Local Certified
Facilitator

100%

of the Local Certified Facilitators participated in the LCF CoP. SWWC offered eight opportunities to engage totaling 16 hours, as well as 63 hours of coaching support.

STRUCTURED LITERACY PARAPROFESSIONAL TRAINING PILOT

SWWC led the charge in the MN READ Act Structured Literacy Paraprofessional Training Pilot with **THREE** districts participating resulting in **205** paras being trained!

“

Our goal is to ensure that every student, regardless of background or socioeconomic status, has access to high-quality literacy instruction. Literacy isn't just an academic skill - it's a social justice issue.

Natalie Delmonico
Regional Literacy Lead

LOCAL PROGRAM PREPARES NEXT GENERATION OF HEALTHCARE WORKERS

For many students, high school is about exploring who they are and what they want to become. At Montevideo Public Schools, the new Montevideo Medical Academy is giving that exploration a real-world purpose. Supported by a \$15,000 LYFT Career Pathways grant through SWWC, the academy connects students with hands-on learning in healthcare—one of the region’s fastest-growing and most essential career fields.

Students step into the shoes of medical professionals, gaining exposure to nursing, therapy, emergency response, and more. Instead of just reading about healthcare careers, they practice skills, meet local professionals, and begin to envision themselves in these roles. One student shared that the academy “opened my eyes to all the possibilities in healthcare I never knew existed,” while another said it gave them “the confidence to see myself working in a hospital one day.”

The impact extends beyond personal growth. With Minnesota facing critical shortages in healthcare workers, programs like the Montevideo Medical Academy are helping to prepare a pipeline of skilled, motivated professionals who can serve local communities for years to come.

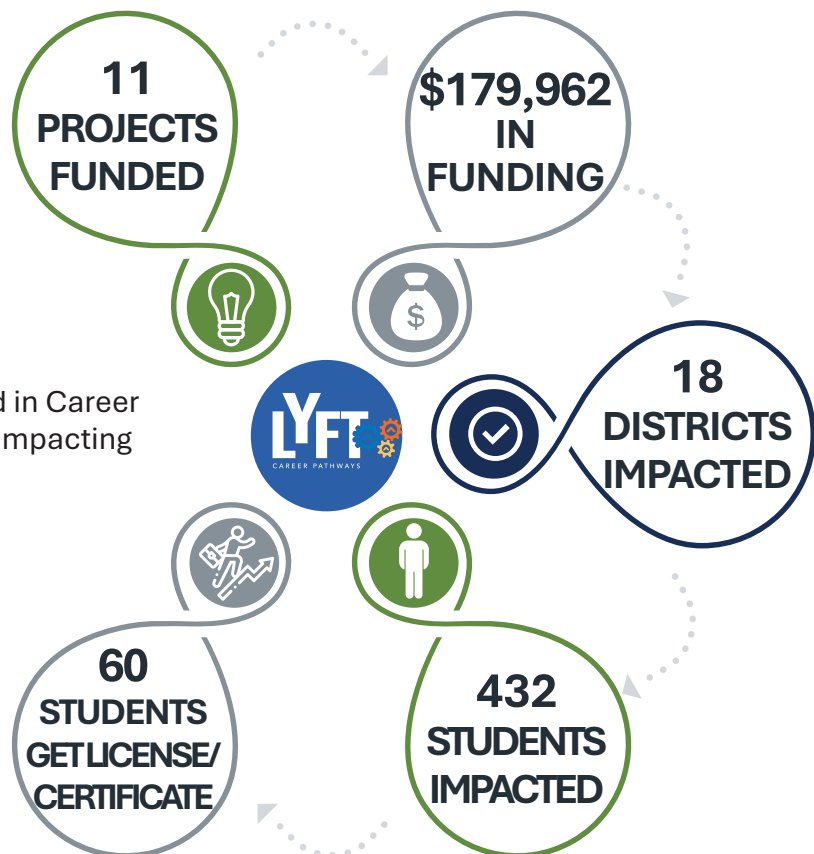
By investing in students today, LYFT Pathways and SWWC are not only transforming classrooms—they’re shaping the future of healthcare in southwest and west central Minnesota. The Montevideo Medical Academy is more than a program; it’s a spark that is inspiring students to imagine, prepare for, and step into careers that make a difference.



Scan this QR code to view the Montevideo Medical Academy video.

LYFT CAREER PATHWAYS 2024-25 IMPACT

An additional \$120,000 was invested in Career Navigation and Connector Services impacting 45 schools and 7,184 students!



FROM CLINIC TO CLASSROOM

As a Physical Therapist with SWWC, Taylor Huseby works under the special education umbrella to support students with gross motor needs. Serving students from birth through third grade who have Individualized Education Programs (IEPs), Taylor helps children strengthen their balance, coordination, and mobility so they can confidently participate alongside their peers.

Taylor's career began in the clinical and outpatient setting, but he found his true calling in schools. One of Taylor's most rewarding memories was watching a young student, once unable to climb a rope ladder, proudly join his classmates at the top by the end of the school year. "When he got to the top, he yelled for me to see and he was so proud," Taylor says. "It was so cool."

For Taylor, working at SWWC is more than a job—it's about purpose. "Every student I work with has a significant need, and it's rewarding to see progress throughout the year. From a personal standpoint, I also get to be more present with my own family, thanks to the alignment of the school schedule."

Taylor's work ensures students gain confidence, independence, and the joy of achieving milestones.



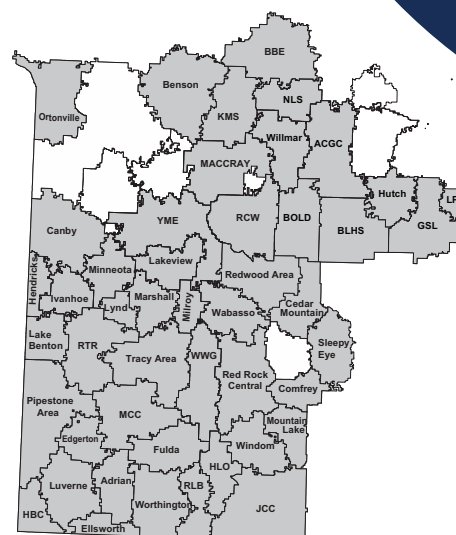
A NEW GENERATION FOR THE WAN

The SWWC Wide Area Network Consortium (SWWC WAN) dates back to 1980 when it began as several smaller consortia. On July 1, 2024, it expanded to include members from the former Little Crow Telecommunications Network and Minnesota River Valley Education District Network. The SWWC WAN is now one unified network serving a wide range of members across southwest and west central Minnesota on a completely fiber-based network. This consolidated effort is providing participating members with cost-savings while accessing expertise and excellence in services.

- 48 school districts (shown at right)
- 22 public libraries
- 3 parochial schools
- 9 SWWC sites

The SWWC WAN is much more than just Internet, although we provide 20Gbps of that too!

- 6 Gbps of connectivity to Internet2, an exclusive Internet for education and research institutions worldwide
- Expert management and support from our SWWC team and professional partners
- Advanced Next-Generation Firewall, DDoS and other Cybersecurity protections
- Provision of E-Rate Coordination, Security Awareness Trainings, and Cybersecurity Assessments to participating members



SOUTHWEST WEST CENTRAL SERVICE COOPERATIVE



Education & Administrative Resources



CONTACT US

507-537-2240



www.swwc.org



100 London Road
Marshall, MN 56258



SWWC is a member of

